

The future is intermodal

Resilient. Digital. Connected across Europe.



950,000
road consignments
shifted to railways



8,300 rail platforms
completely low-noise



130 trains per day
in the Hupac Group network



1.3 million tonnes CO₂e
saved in the network



12 terminals
managed by the Hupac Group



20 railway partners
selected for specific relations



730 employees
full-time equivalent

Smart connections for a sustainable future

The Hupac Group is a leading provider of intermodal transport solutions, combining continental and maritime logistics across Europe and beyond. Every day, around 130 trains link key economic regions, handling close to one million road consignments each year.

We connect markets – reliably, efficiently, and sustainably. With our integrated network and strong presence in terminals and seaports, we help our customers decarbonise supply chains and optimise their logistics performance.

Our strategy is clear: we invest where we can make a difference. New terminals, modern railcars, and digital technologies are the backbone of our competitiveness. At the same time, we strengthen partnerships across the entire value chain – from rail traction to terminal operations.

Resilience is more than a buzzword. We are building robust corridors with multiple daily departures to ensure flexibility and stability in an increasingly volatile transport environment.

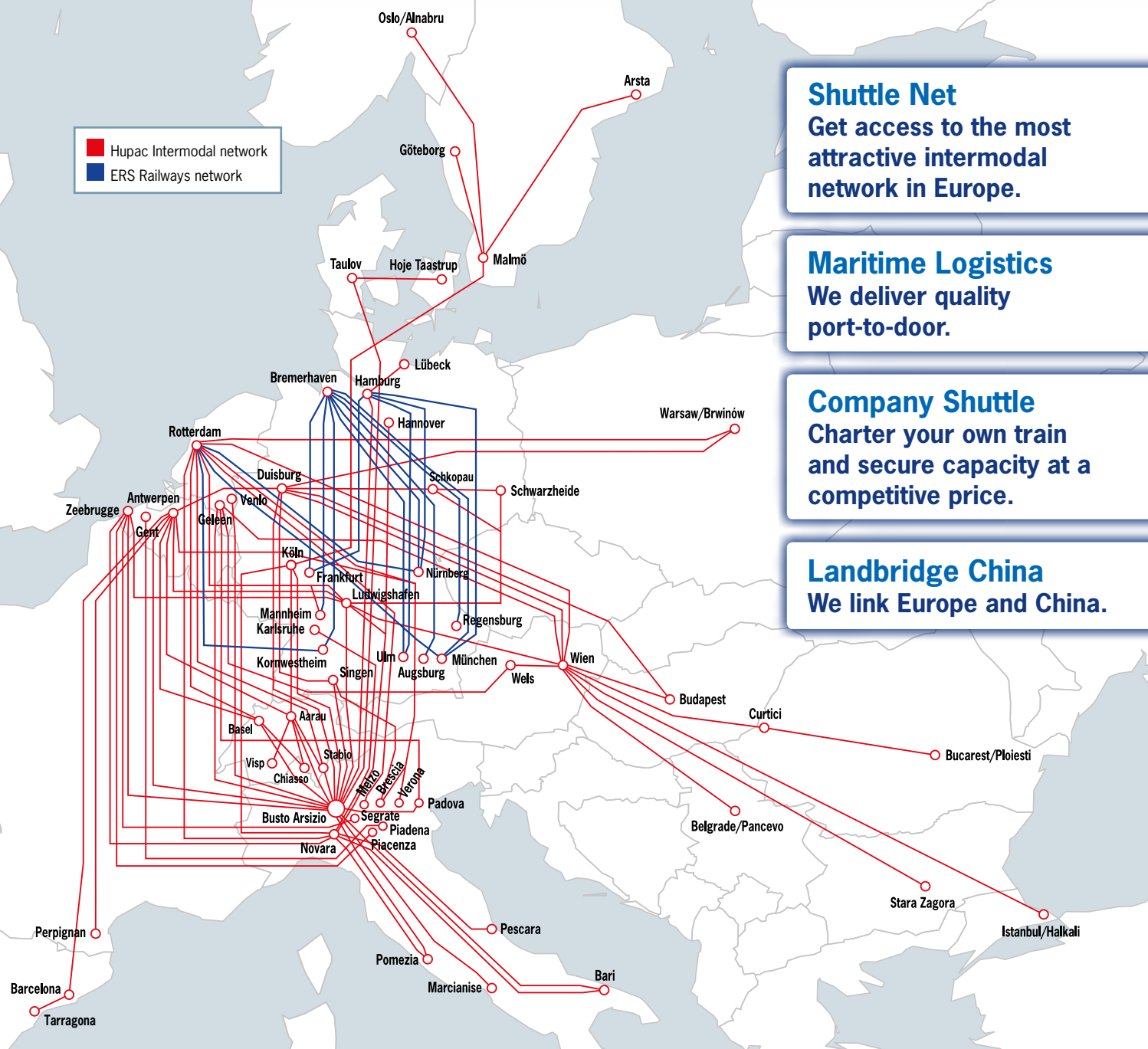
Digitalisation is at the heart of our transformation. We are driving the automation of intermodal logistics to offer full shipment visibility and smart planning tools for our customers.

At Hupac, we believe that rail is the way forward. Together with our partners and stakeholders, we work to create a high-performing intermodal system that benefits businesses, the environment, and society as a whole.

**Intermodality is more than a transport concept – it's a mindset.
Let's shape the future together.**



Hupac Group network. The power of intermodality



Shuttle Net

Get access to the most attractive intermodal network in Europe.

Maritime Logistics

**We deliver quality
port-to-door.**

Company Shuttle

**Charter your own train
and secure capacity at a
competitive price.**

Landbridge China

We link Europe and China.

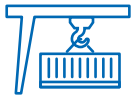


Our services: resources, solutions, expertise

Reliable, flexible, and ready to go – across Europe.



Integrated network with 130+ daily trains connecting major European corridors



Efficient terminals, owned or co-managed, at key hubs like north Italy, Antwerp, Rotterdam, Duisburg, Cologne, Ludwigshafen, Singen, Vienna and Warsaw/Brwinów



Modern fleet of over 8,300 rail platforms for maximum flexibility and independence



Expert teams in 10 countries providing tailored, hands-on customer service



Selected rail partners, best-in-class in their region, ensuring reliable traction



Contingency-ready with reserve trains, stand-by drivers, and 24/7 traffic control



Smart digital tools for booking, tracking, planning, and real-time updates



Technical support to ensure full compatibility with intermodal standards

Focusing on core corridors

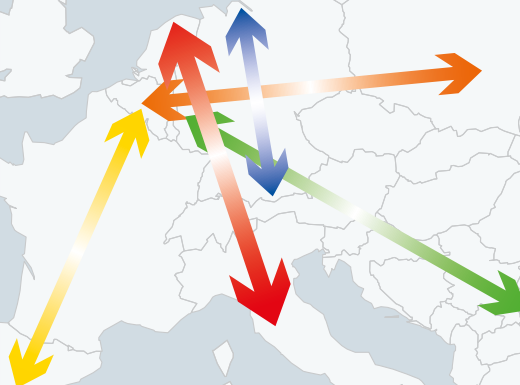
North-south corridor

Northeast corridor

Southeast corridor

Southwest corridor

Maritime transport





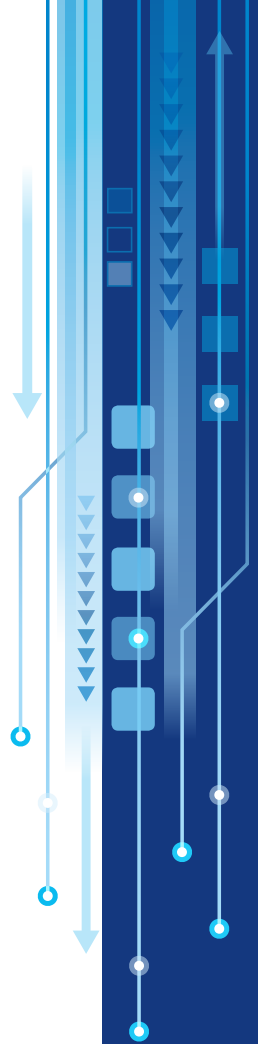
Resilience: stability in a disrupted world

A robust intermodal system that keeps moving – even when disruptions hit.

At Hupac, we invest in a resilience-oriented production system that helps prevent disruptions, respond quickly when they occur, and ensure rapid recovery. With targeted infrastructure, digital tools, and strong operational planning, we're building an intermodal system that is fit for today's challenges – and tomorrow's.

- Boosting train frequency to ensure faster recovery and stable capacity
- Weekend capacity to clear backlogs and support operations
- Diversions via France (Metz–Basel), Gäubahn, Alsace, Ruhr-Sieg
- Political advocacy for smarter construction planning
(min. 80% corridor capacity)
- Parking sidings along corridors for flexible train handling during disruptions
- Gateway routings via Ludwigshafen, Cologne, Antwerp, Novara, Milan in case of need
- Active deployment of reserve wagons and drivers
- Pipeline concept at terminals for efficient rail resource management
- Buffer parking areas near terminals to ease congestion

We keep intermodal transport moving – no matter the challenge.





The power of intermodality

