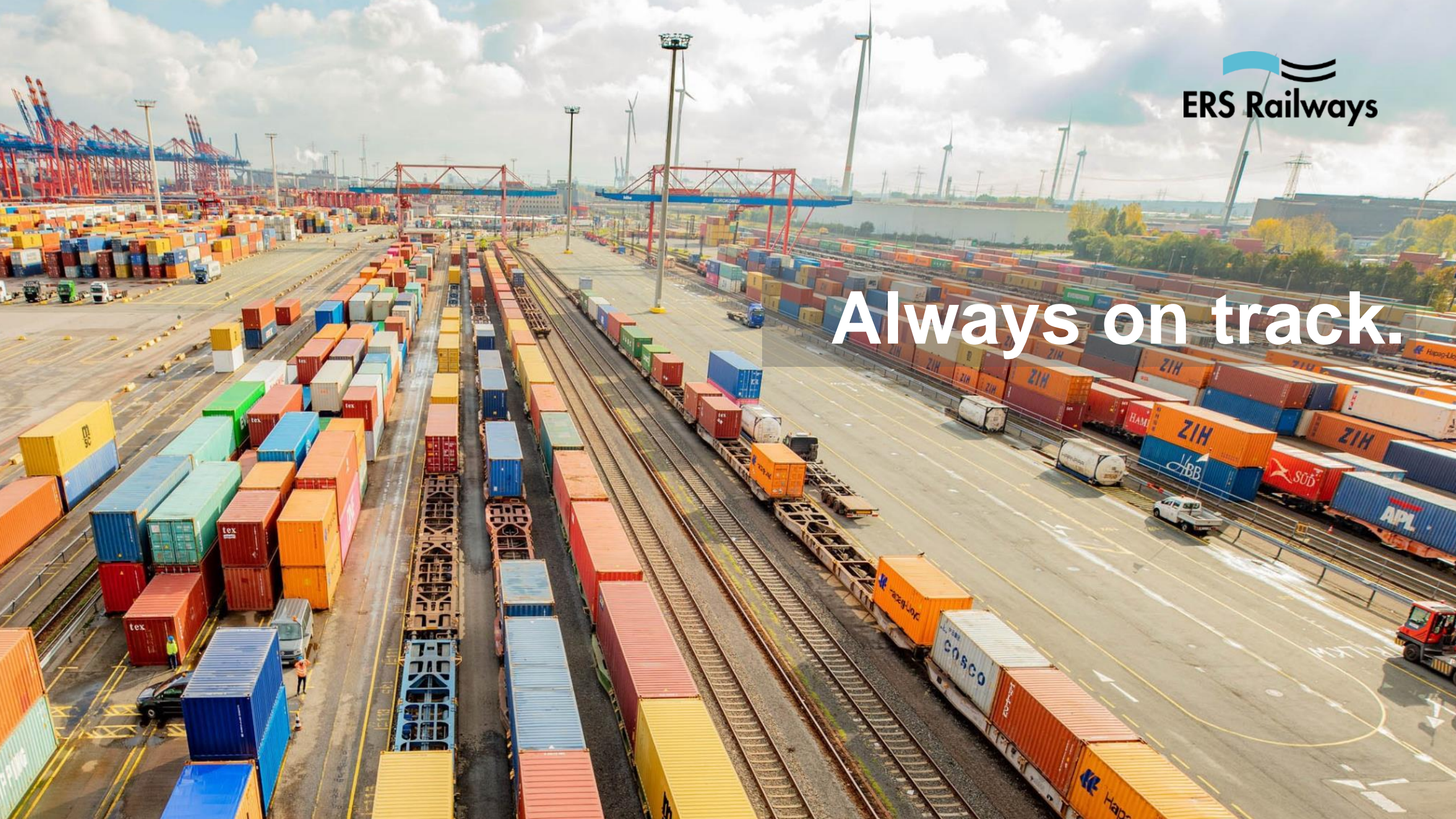


Always on track.



ERS Railways

Born with a maritime DNA



265,000 TEUs
shifted to railways



100 roundtrips per week
in the regions Germany, Austria, Switzerland



100% green energy
in the rail production Germany



50 staff members
in Hamburg, Stuttgart, Munich, Rotterdam



1994 founded in Rotterdam
by 4 shipping companies and 1 railway company



2018 part of the Hupac Group

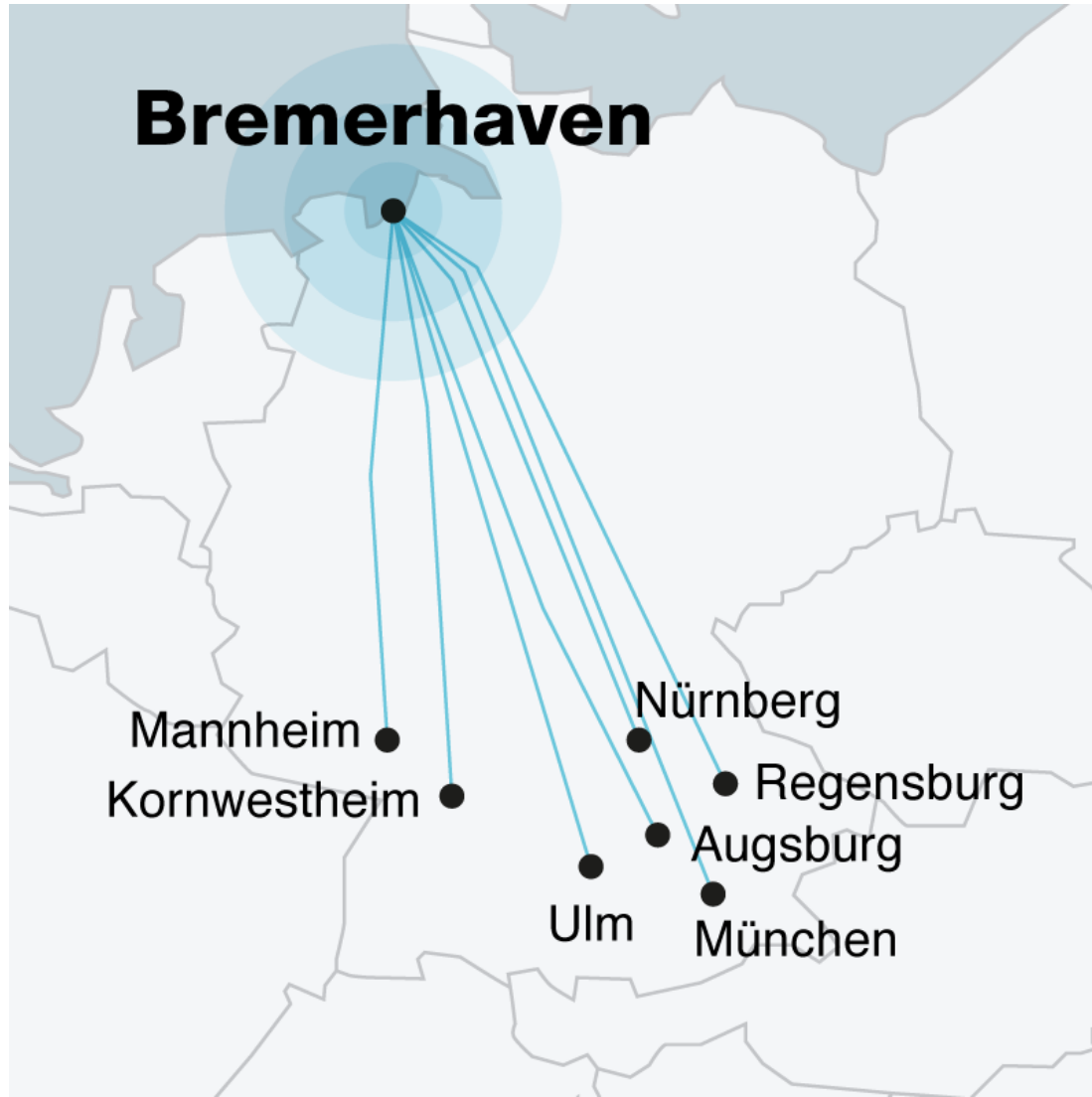


High frequency network connecting Germany to seaports

-  **Bremerhaven**
30 roundtrips per week
-  **Hamburg**
30 roundtrips per week
-  **Rotterdam**
10 roundtrips per week



Our offer from/to Bremerhaven



	Roundtrips
> Bremerhaven ⇌ Mannheim	4
> Bremerhaven ⇌ Kornwestheim	3
> Bremerhaven ⇌ Ulm	5
> Bremerhaven ⇌ Nürnberg	5
> Bremerhaven ⇌ Regensburg	3
> Bremerhaven ⇌ Augsburg	3
> Bremerhaven ⇌ München	6

Our offer from/to Hamburg



	Roundtrips
> Hamburg ⇌ Kornwestheim	8
> Hamburg ⇌ Ulm	9
> Hamburg ⇌ Nürnberg	5
> Hamburg ⇌ München	5
> Hamburg ⇌ Frankfurt/Main	4

Our offer from/to Rotterdam



Roundtrips

- > Rotterdam ⇌ Nürnberg 5
- > Rotterdam ⇌ München 2
- > Rotterdam ⇌ Kornwestheim 3

boxXpress – privileged access to railway resources



ERS Railways is the biggest shareholder of boxXpress GmbH



boxXpress only operates maritime transport



40 Siemens Vectron locomotives with ECTS and driver assistance



Modern wagon fleet max. 2,5 years old, with low noise breaks that last up to 240,000 km



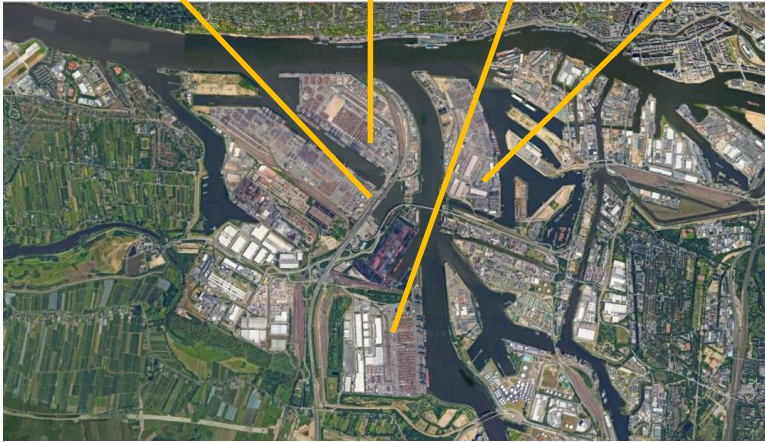
boxXpress runs with green electricity since 2020



Operational concepts dedicated to efficiency

Terminals Hamburg

EKOM Eurokombi **CTA** Altenwerder
CTB Burchardkai **CTT** Tollerort



EKOM / CTA / CTB served by block trains + multi-quay trains + trucks



CTT served by truck

Terminals Bremerhaven

NTB North Sea Terminal
Eurogate Container Terminal



NTB / Eurogate Terminal are served by 1- and 2-quay trains

Terminals Rotterdam

APMT2 **APMT1** **ECT**
RWG **Euromax** **RSC**



Terminals served by block trains



Rail transfer via PortShuttle



All terminals are available by truck

Easy booking procedure

Current online information on ERS website

- > Digital timetable
- > Real time capacity per day and relation

Booking procedures and connection

- > Online booking on website
- > Email
- > EDI (AC03 interface, HTML)

Bremerhaven - Kornwestheim

von: Bremerhaven

nach: Kornwestheim

am: 01/26/2024

Finden

«

Rückwärtssuche: ☐

»

Slot	Terminal	Ereignis	KW3/2024				KW4/2024						KW5/2024			CO2e		
			DO 18.1.	FR 19.1.	SA 20.1.	SO 21.1.	MO 22.1.	DI 23.1.	MI 24.1.	DO 25.1.	FR 26.1.	SA 27.1.	SO 28.1.	MO 29.1.	DI 30.1.			MI 31.1.
B0600-M-1	CT1-3 →	Buchungsschl. Abfahrt	13:00														17 kg/to	
	→ KWH	Ankunft Bereitstell.	20:00					06:30 08:00										
B0600-M-1	CT4 →	Buchungsschl. Abfahrt	13:00														17 kg/to	
	→ KWH	Ankunft Bereitstell.	20:00					06:30 08:00										
B0600-M-1	CT1-3 →	Buchungsschl. Abfahrt	13:00														17 kg/to	
	→ KWH	Ankunft Bereitstell.	06:00				06:30 08:00											
B0600-M-1	CT1-3 →	Buchungsschl. Abfahrt						13:00									17 kg/to	
	→ KWH	Ankunft Bereitstell.						08:00		06:30 08:00								
B0600-M-1	CT4 →	Buchungsschl. Abfahrt						13:00									17 kg/to	
	→ KWH	Ankunft Bereitstell.						08:00		06:30 08:00								
B0600-M-1	CT4 →	Buchungsschl. Abfahrt							13:00								17 kg/to	
	→ KWH	Ankunft Bereitstell.							06:00		06:30							

© 2020-2024 4PL Intermodal GmbH (Version 0.9.5)

We go green – without compromise



Emission free rail transport
No extra charges for CO₂-free rail transport



Continuous efforts to improve environmental impact



Vectron e-locos with intelligent driver assistance and highest possible energy recovery



Certificate for our customers to proof CO₂ reduction

New developed CO₂ emission calculator allows live calculation of CO₂ impact of every transport



ERS – what makes us special?



ERS was born maritime. We offer a full range of maritime solutions including single containers, slot solutions and block trains



Dedicated to efficiency in the way we work and produce our trains

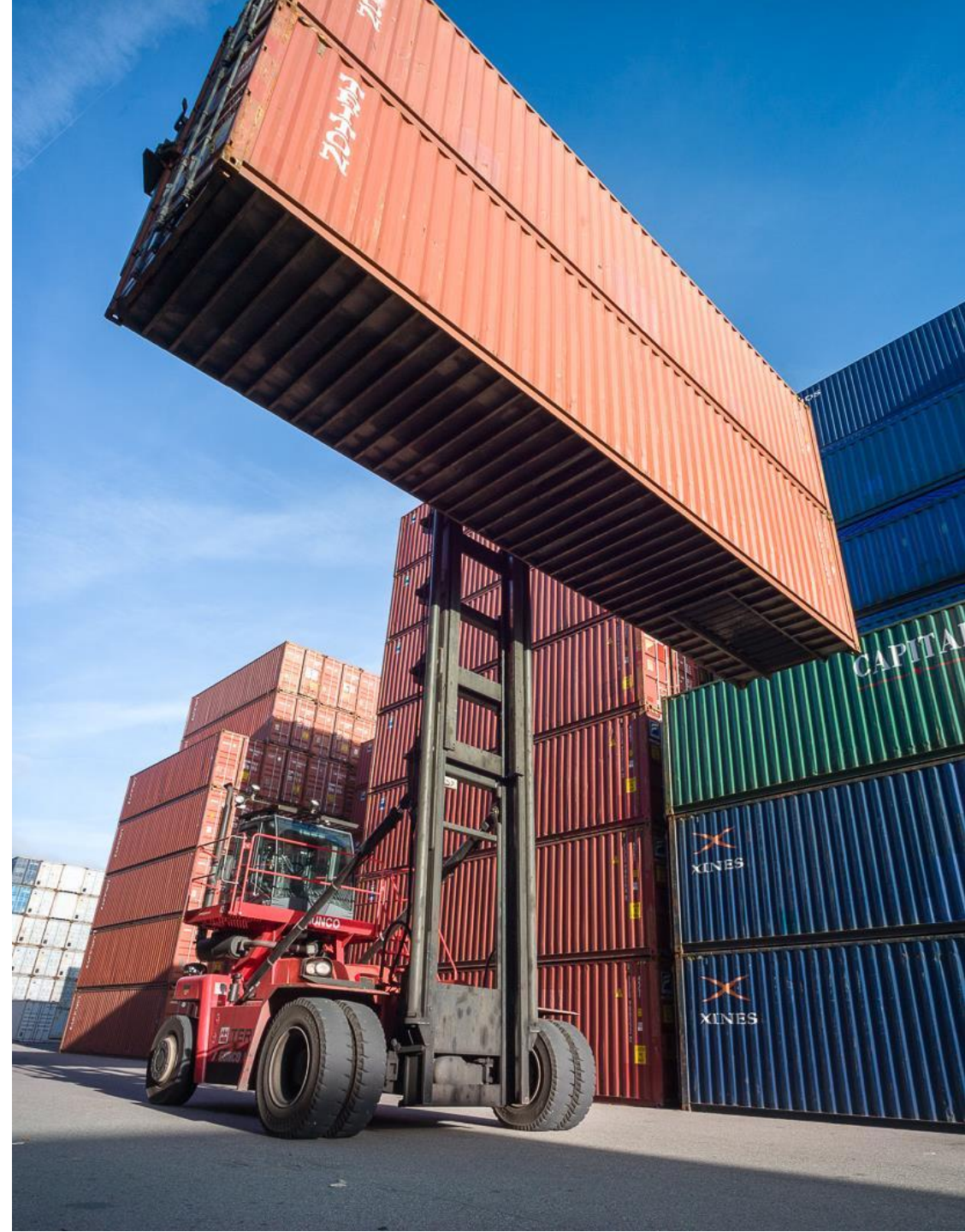


All our trains run on green electricity at no extra cost



Small, agile and committed team, headquartered in Hamburg with local contacts in Stuttgart, Munich and Rotterdam

With shareholder Hupac, ERS expands its services and network





ERS is member of the Hupac Group since 2018



950,000 road consignments
shifted to railways



1.3 million tonnes CO₂
saved in the network



130 trains per day
in the Hupac Group network



12 terminals
managed by the Hupac Group



20 railway partners
selected for specific relations



8,300 rail platforms
completely low-noise



700 staff members
full-time equivalent



CHF 648.1 million turnover in 2023
EUR 667.0 million

CHF -6.2 million result in 2023
EUR -6.4 million

Hupac Group network. The power of intermodality

Shuttle Net

Get access to the most attractive intermodal network in Europe and up to the Far East.

Company Shuttle

Charter your own train and secure capacity at a competitive price.

Maritime Logistics

We deliver quality from port to door.

YOUR ADVANTAGE



Strong partner with an extensive intermodal network



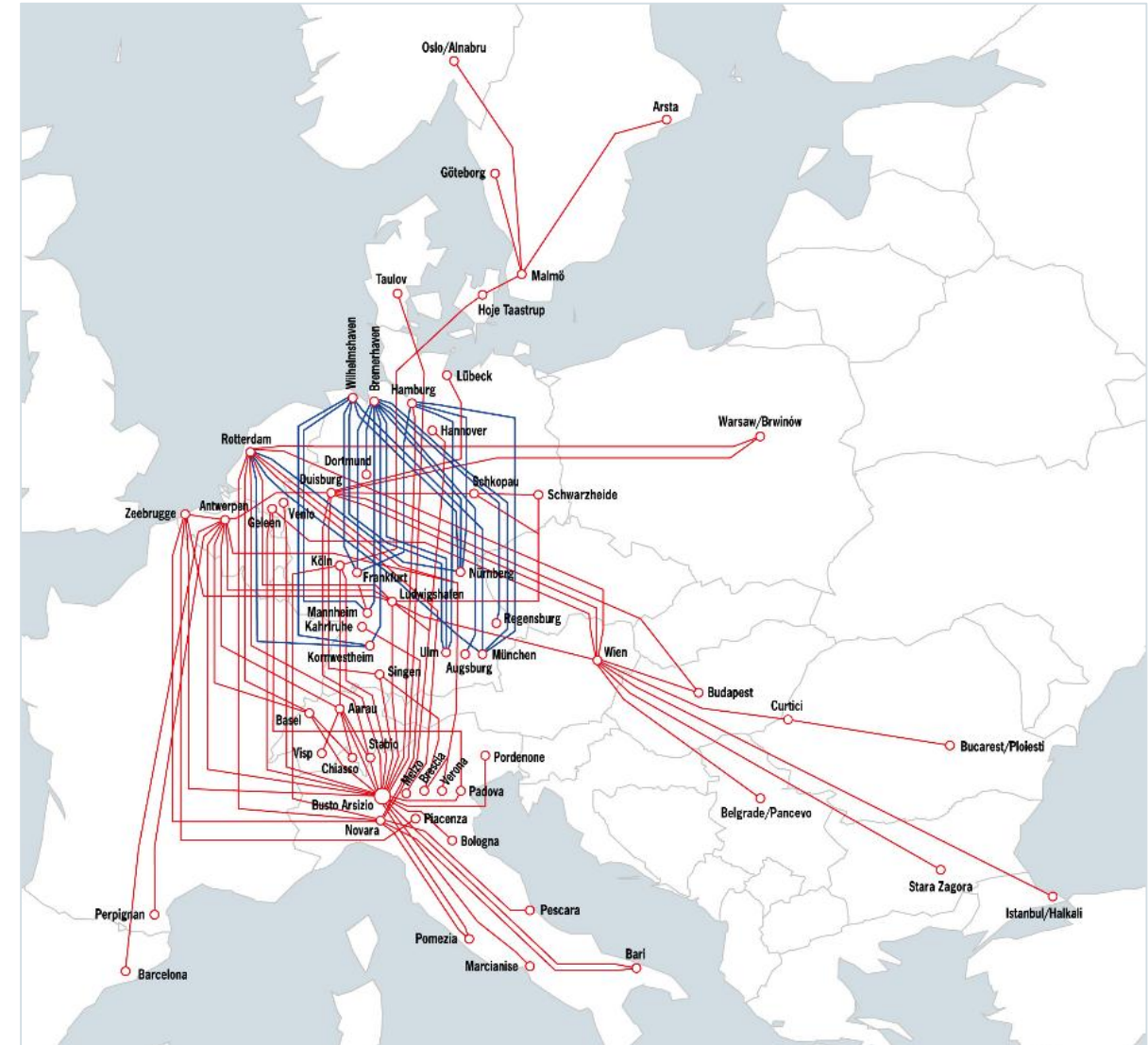
Own resources for reliability and long-term market commitment: wagons, terminals, railway partners



Full package of digital & technical services



Eco-friendly: 90% less CO₂, 75% less energy



Get in touch with our team!

Our dedicated teams are experts in their respective regions and are available to provide you with exceptional service and support.

With local knowledge and expertise, we can ensure that your requirements are met and that you have a full-service experience. Our teams are here to assist you every step of the way.

Sylwia Lutynska

Head of Sales
Tel. +49 40 756687301
s.lutynska@ersrail.com

Tjeerd Spierdijk

Deputy Head of Sales
Mob. +31 614 840909
t.spierdijk@ersrail.com

Barbara Melend

Sales Executive
Tel. +49 40 756687430
b.melend@ersrail.com

Marco Baur

Sales Region Southwest
& Switzerland
Tel. +49 40 756687308
m.baur@ersrail.com

Andreas Schulz

Sales Region Southeast
& Austria
Tel. +49 40 756687309
a.schulz@ersrail.com

Marcus Enzmann

Sales (Inside Sales)
Tel. +49 40 756687307
sales@ersrail.com

Stefanie Carstens

Sales (Inside Sales)
Tel. +49 40 756687303
sales@ersrail.com



Thank you!